



# IK-WF51R

## 5MP Vandal Resistant Panoramic IP Camera

### Vandal-resistance with Panoramic Views and IR LEDs

The Toshiba IK-WF51R is a 5MP panoramic vandal-resistant dome IP camera with integrated IR LEDs. Surround viewing and up to 15fps in full resolution empower the IK-WF51R to cover large surveillance areas with a single camera. IR LEDs and an aesthetically pleasing yet rugged form factor make it suitable for any indoor or outdoor application. ONVIF compliance and PoE/PoE+ ensure compatibility with Toshiba and 3rd party systems.

- 5MP resolution
- Digital WDR and True Day/Night
- Full surround panoramic view
- Integrated IR LEDs
- Ceiling, wall & desktop mount
- IP66 and IK10 ratings
- MicroSD card for edge recording
- ONVIF compliant for maximum compatibility
- PoE (802.3af) and PoE+ (802.3at)
- On board Dewarping



# IK-WF51R

5MP Vandal-Resistant Panoramic IP Dome

**TOSHIBA**  
Leading Innovation >>>

## Camera

|                          |   |
|--------------------------|---|
| <b>Image sensor</b>      | 1/2.5 inch CMOS 5MP   |
| <b>Effective pixels</b>  | 2560 x 1920 (4:3)   |
| <b>Lens</b>              | Fisheye f=1.5mm, F=2.8  |
| <b>Lens type</b>         | Fixed focal M12   |
| <b>Angle of view</b>     | 175° horizontal<br>175° vertical                                  |
| <b>Min. Illumination</b> | 0.6 lux / F2.8 (50 IRE,<br>Gain 100%, 1/30 sec),<br>0 lux w/IR on |
| <b>IR illuminators</b>   | IR LED, 10m x 10m area<br>at 3m range (see Diagram A)             |

## Camera Features

|                           |                                 |
|---------------------------|---------------------------------|
| <b>Day/Night</b>          | Yes, IR cut filter              |
| <b>Wide Dynamic Range</b> | Digital WDR                     |
| <b>White balance</b>      | Manual,<br>AWB (2500K - 10000K) |
| <b>Gain (AGC)</b>         | Auto                            |
| <b>BLC</b>                | Yes                             |
| <b>Privacy mask</b>       | Yes                             |
| <b>Motion detection</b>   | Yes                             |
| <b>Tamper protection</b>  | Yes                             |

## Video

|                                      |   |
|--------------------------------------|---|
| <b>Compression</b>                   | H.264, MPEG4, MJPEG   |
| <b>Resolutions</b>                   | 1920x1920, 1536x1536, 1280x1280,<br>1056x1056, 768x768, 512x512,<br>384x384, 256x256, 192x192 |
| <b>Video streams</b>                 | 3 streams   |
| <b>Frame rate (max) <sup>1</sup></b> | 15 fps @5MP<br>25 fps @1080p (MPEG4)<br>30 fps @1080p (H.264, MJPEG)                          |
| <b>Dewarp</b>                        | Local camera and software<br>dewarping  |

## Audio

|                                  |  |
|----------------------------------|--|
| <b>Audio Compression</b>         | G.726, G711  |
| <b>Audio In/Out <sup>2</sup></b> | Built in MIC, MIC In (plug-in power<br>3.3V, 200kΩ), Line OUT (1 Vrms) |

## Interface

|                            |  |
|----------------------------|--|
| <b>Ethernet connectors</b> | 10 Base-T/100 Base-TX,<br>RJ45 connector |
| <b>Digital In/Out</b>      | 1 in/1 out                               |
| <b>SD card slot</b>        | MicroSD/SDHC/SDXC 64GB max               |

<sup>1</sup>: Varies in accordance with the object, image quality, network environment and performance of the personal computer used.

<sup>2</sup>: The sound may not be clear depending on the conditions of the lines.

## Network

|                              |  |
|------------------------------|--|
| <b>Protocols</b>             | IPv4, IPv6, TCP/IP, HTTP, HTTPS,<br>UPnP, RTSP/RTP/RTCP, IGMP,<br>SMTP, FTP, DHCP, NTP, DNS,<br>DDNS, PPPoE, CoS, QoS,<br>SNMP, and 802.1X |
| <b>ONVIF</b>                 | Profile-S (test tool v14.12)   |
| <b>Maximum user access</b>   | 10 clients   |
| <b>Security</b>              | Multi level ID/Password, IP address<br>filtering, HTTPS, 802.1x port-<br>based authentication  |
| <b>Basic Authorization</b>   | Yes (Windows standard)   |
| <b>Bandwidth control</b>     | QoS, CoS   |
| <b>Camera set-up program</b> | Installation Wizard  |
| <b>Plug-In</b>               | Active X   |
| <b>Alarm recording</b>       | FTP, email, MicroSD card, HTTP   |

## General

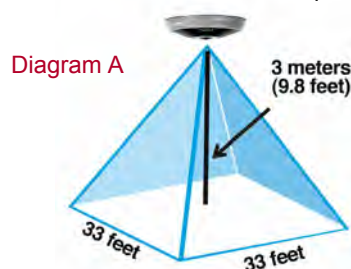
|                              |  |
|------------------------------|--|
| <b>Dimensions</b>            | 2.0 inch (H) x 6.3 inch (Diameter)<br>(51mm x 160mm)                                 |
| <b>Weight</b>                | 1.75 lbs (794g)  |
| <b>Power requirements</b>    | 802.3af PoE, 802.3at PoE+,<br>12V DC ± 10 %  |
| <b>Power consumption</b>     | 22W  |
| <b>Operation temperature</b> | PoE: 14°F to 122°F (-10°C to 50°C)<br>PoE+/12V DC: -22°F to 122°F<br>(-30°C to 50°C) |
| <b>Operation humidity</b>    | ~ 90%  |
| <b>Approvals</b>             | FCC/B (verification),<br>IC(ICES-003), UL(60950), cUL                                |
| <b>Vandal resistance</b>     | IK10   |
| <b>Environmental</b>         | IP66, EN50155 Railway standard   |
| <b>Warranty</b>              | 2 years  |

## System Requirements

|                            |   |
|----------------------------|---|
| <b>Web browser support</b> | Internet Explorer® Ver. 8.0 or later                    |
| <b>Supported OS</b>        | Windows® XP, Vista® Business,<br>Windows 7 professional |

## Accessories

|                 |   |
|-----------------|---|
| <b>Included</b> | Quick start guide, CD-ROM,<br>alignment sticker, screw and<br>anchor kit, desiccant, screw driver,<br>power I/O cable, mounting bracket |
|-----------------|---|



©2015 Toshiba America Information Systems, Inc. All rights reserved. All products and names mentioned are the property of their respective owners. While Toshiba has made every effort at the time of publication to ensure the accuracy of the information provided herein, product specifications, configurations, prices, system/component/options availability are all subject to change without notice.

Toshiba America Information Systems, Inc.  
Surveillance & IP Video Products, Imaging Systems Division  
9740 Irvine Boulevard, Irvine, California 92618  
1-877-855-1349 • [www.toshibasecurity.com](http://www.toshibasecurity.com)

# IK-WF51R

5MP Vandal-Resistant Panoramic IP Dome

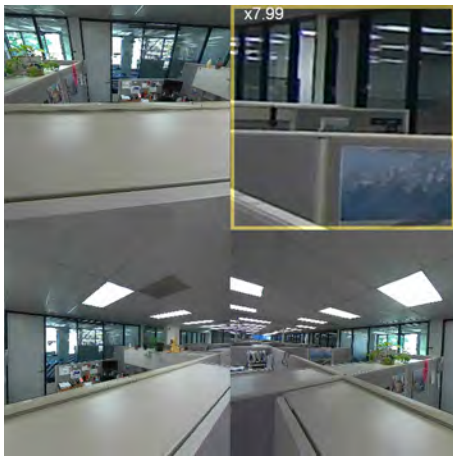
**TOSHIBA**  
Leading Innovation >>>

## Camera Modes

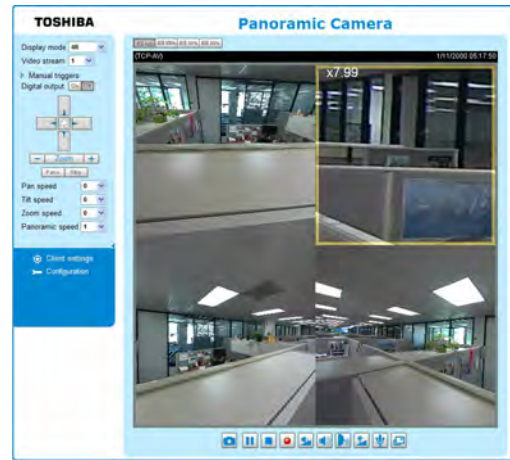
The IK-WF51R panoramic camera can display full surround video in multiple modes such as: original surround, full panoramic, 4 regions of interest, or combinations of original surrounds or panoramic plus regions of interest. With electronic PTZ controls, the panoramic camera can cover a large surveillance area with a single device.



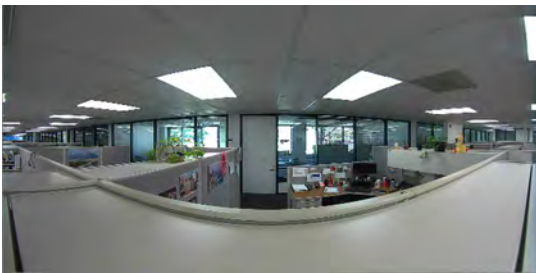
Original surround



Four Regions of Interest  
(no GUI)



Four Regions of Interest  
(with GUI)



Panoramic  
(no GUI)



Panoramic  
(with GUI)

# IK-WF51R








5MP Vandal-Resistant Panoramic IP Dome

**TOSHIBA**  
Leading Innovation >>>

## Included Accessories

- Quick start guide
- Screw and anchor kit
- CD-ROM
- Cable tie
- Alignment sticker

## Optional Accessories

| Accessory Type | Part Number | Description  | Photo   |
|----------------|-------------|--|---|
| Corner Mount   | JK-CMA12    | Corner mount adapter. Requires use with JK-PHO14 and JK-WM12 |    |
| Pendant Mount  | JK-PHO14    | Pendant mount adapter  |    |
| Pole Mount     | JK-PMA12    | Pole mount adapter. Requires use with JK-PHO14 and JK-WM12   |    |
| Pendant Head   | JK-PMH12    | Pendant head adapter. Requires use with JK-PHO14             |   |
| Pendant Pipe   | JK-PMP12    | Pendant pipe. Requires use with JK-PMH12                     |  |
| Wall Mount     | JK-WM12     | Wall mount. Requires use with JK-PHO14                       |  |
| Adapter Plate  | JK-JBA3     | Adapter plate for mounting to 4-11/16" junction box          |  |